

# THE COLORING BOOK

Photos: Alexei Afonin [www.alexelpro.com](http://www.alexelpro.com)

## SELECTING YOUR SHADE

Selecting a great hair color can be a challenging process. Always consider your skin tone, natural hair color, wardrobe and career before making your color transformation. Taking your cue from on trend hues, opt for shades that glow, such as Creme of Nature Red Copper, Intensive Red, Warm Bordeaux and Golden Brown.

To best match your skin tone, hold a hair swatch next to your skin. This will give you an idea of how your skin tone looks with different shades of hair color. In addition, the back panel on the coloring kit displays the expected color results based on your current hair color. If you are still uncertain about your color choice, trying on a variety of wigs in different hues will give you a better idea of how a particular hair color looks next to your skin.

Warm skin tones look best in warm shades, while cool skin tones are best enhanced with cool shades of color. If you are attracted to warm shades, golden brown, copper bronze, or caramel blonde are good options. Dark brown, burgundy, jet black or ash blonde work well for those attracted to cool tones.

Whether you choose lighter or darker hair color is a matter of personal preference. For a natural looking change, remember to stay within three shade levels of your natural hair color. The lighter or darker you move away from your natural hair color, the more drastic the change.

Popular colors for the upcoming season are Cinnamon Brown, Red Copper and Warm Bordeaux by Creme of Nature.

## MAINTAINING YOUR MANE

Touch-up your new color every six to eight weeks. For the best results, keep a record of the shade used and the processing time, so that you can achieve even results when you re-color. To avoid causing major damage to your hair, be sure that there is at least a two-week window between permanently coloring and relaxing your hair.

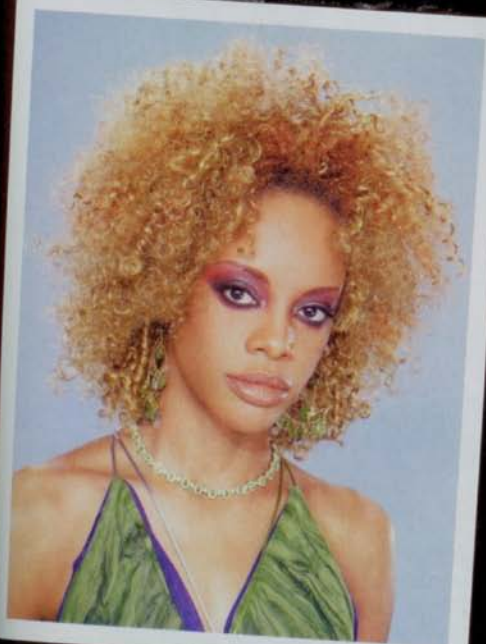


Try a fabulous hair color that expresses your own personal take on style. Choosing a rich, brown shade gives a sleek style richness and depth.

Give a demure style a vibrant twist with a spicy copper-toned color. This is a perfect shade for the lady that wants to stand out in the crowd.



14K gold is not just limited your jewelry. Here this bold gold hair color looks even stronger done on this curly, textured hair. Wearing this color and style speaks volumes for your style without you saying a word.



Ready to step out of the box with a new take on color? This marvelous mocha-toned 'do does it well! The color is perfect if you want to step up from an ordinary brown color, but not quite into being a serious blonde.



Who says a bob in a dark brown shade has to be conservative? Incorporate a few added attractions with a few baby blue clip-in pieces. This is a great way to rock fun colors without a commitment.



Here bronzy highlights dance over this soft textured mane attraction featuring natural curls. When you marry vibrant highlights with curly, textured hair you give light the opportunity to enhance the hair as it plays off the dark and light tones.

Rich and natural colors are the name of this hair color game. Multidimensional highlights are integrated with a chocolate base color making a strong style statement.



Rich golden blonde highlights pop in contrast to the soft ash brown hair color. The cut allows the hair to fall in soft layers with gently curled ends, taking what might be considered a simple style right over the top.

### Editor's Top Choice Hair Color Brand of the issue...

*Crème of Nature® Nourishing Permanent Hair Color*

At-home color has made it possible for women on-the-go to have fast, fabulous hair color without spending salon money. Today, Crème of Nature offers a full array of color selections so that women can achieve gorgeous hair in the comfort of their home. Crème of Nature Colors retail for \$6.99 in beauty and barber supply and food, drug and mass market stores. Women on-the-go should consider that selecting a shade close to their natural hair color will offer a more natural blend, thus requiring less frequent touch-ups.

Using moisturizing shampoos and conditioners is key to keep your color looking vibrant and fresh. As you go lighter, the

hair tends to become dryer. Therefore, it is an absolute must that you deep condition your hair on a regular basis. We suggest using Crème of Nature® Kiwi & Citrus Ultra Moisturizing Shampoo and Crème of Nature® Chamomile & Comfrey Healing Conditioner for dry, brittle hair.

